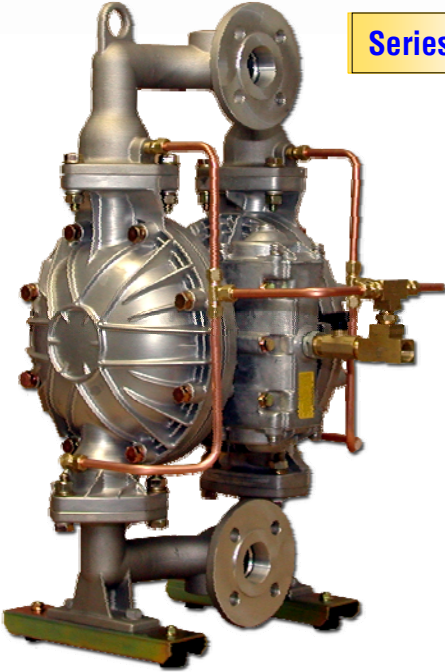


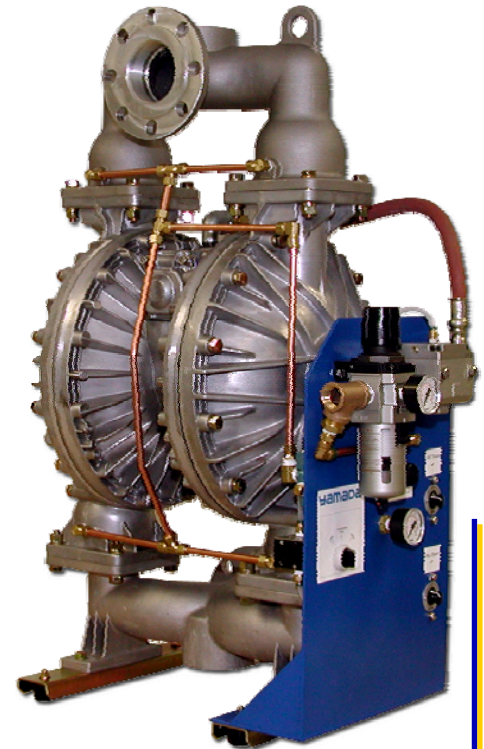
Series BH-2



Yamada Powder Pumps were specifically designed to move bulk solids more effectively throughout your process. They are a cost effective replacement for Augers and Conveyors and eliminate unsafe and labor intensive means of moving bulk powders. These heavy duty pumps consistently transfer fine-grained (100um or finer), low bulk density (5 to 50 lbs. / cubic foot), dry powders in a dust-free operation.

Yamada offers a base unit specifically for light powders

Series BH-3



### **Series BH-1:**

- 1-1/2" to 3" port sizes
- Aluminum, Cast Iron, or 316 Stainless Steel housings
- Sweeping one piece manifolds
- Solid 316 Stainless Steel center shaft
- Patented non-lubricated, non-stalling air valve technology
- Bolted mating surfaces
- Portable
- Conveys up to 7 cubic feet per minute (3" model)
- Vacuum Activated Aeration Valve mounted to **Suction** manifold

### **Series BH-2:**

- Includes all of the above features and...
- Compressed air induction system fluidizes all four check valves while the pump is operating

### **Series BH-3:**

- Includes all of the above features and...
- Independent port for inert gas fluidization rather than compressed air
- Delay timer to begin fluidizing check valves 1-60 seconds prior to the pump starting AND 1-60 seconds after the pump stops

Consult Yamada for a "pumpable powders" specification sheet  
Form# PP0802

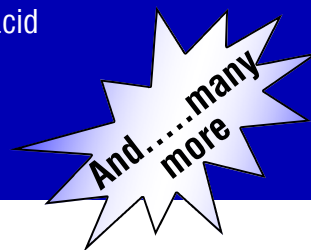
## The Proof's in the Pump

**CALL TOLL FREE 800.990.7867**

Yamada America, Inc  
1200 Nuclear Drive  
West Chicago, IL 60185  
Phone: 630.231.4083  
Fax: 630.231.7405  
www.yamadapump.com  
sales@yamadapump.com

## Applications

|                  |                            |                   |                                       |
|------------------|----------------------------|-------------------|---------------------------------------|
| Activated carbon | Diatomaceous earth         | Pearlite          | Pyrogenic & precipitated silicic acid |
| Acrylic resins   | Expanded mica              | Pesticides        | Quartz powder                         |
| Aluminum oxide   | Fire-extinguishing powder  | Pharmaceuticals   | Salicylic acid                        |
| Bentonite        | Fumed silica               | Pigments          | Silicones                             |
| Carbon black     | Ground limestone           | Powder coatings   | Starch                                |
| Cereal flours    | Kaolin                     | Powdered plastics | Talc                                  |
| Clay powder      | Micro dolomite filter dust | Powdered rock     | Toners                                |



### Specifications:

- Conveying distance depends upon the micron size and the bulk density of the powder. For example fumed silica can be conveyed 150 feet while flour a maximum of 40 feet. Refer to the Yamada “pumpable Powders” data sheet for specific materials.
- Powder must be 150 mesh (106 micron) or smaller size particle / powder and dry. The Pump will not pump crystals or flakes and the bulk density should be less than 50lbs / cubic feet. The higher the bulk density, the shorter the conveying distance and the lower the flow rate.
- The Pump can be located a maximum of 15 feet above powder source.
- Yamada recommends aeration / fluidization of the powder a minimum of 10 to 15 seconds prior to starting the pump- premature diaphragm, center shaft, and center disk failure can be avoided.
- Teflon® check balls are recommend for sticky powders.
- Air volume requirements & capacity:
  - NDP-40 (1-1/2” port): = 15 to 90 SCFM. Maximum flow rate: 144 cubic feet/hr, 2.4 cubic ft/minute
  - NDP-50 (2” port): = 20 to 105 SCFM. Maximum flow rate: 210 cubic feet/hr, 3.5 cubic ft/minute
  - NDP-80 (3” port): = 30 to 120 SCFM. Maximum flow rate: 420 cubic feet/hr, 7.0 cubic ft/minute
- Yamada recommends regulating compressed air to 70PSI Maximum.

Note: Add the kit # to the standard Yamada nomenclature when ordering.  
 Example: NDP-50BAC-BH-2 for a 2” Aluminum Pump with Neoprene elastomers & Series-2 Powder features.



# Yamada

| Kit # | Description                                                                                                                                                |
|-------|------------------------------------------------------------------------------------------------------------------------------------------------------------|
| BH-1  | Kit includes Vacuum Actuated Aeration Valve on Suction Side of Pump                                                                                        |
| BH-2  | Kit Includes Vacuum Actuated Aeration Valve on Suction Side of Pump & Air Induction System at Check Valves                                                 |
| BH-3  | Kit includes Vacuum Actuated Aeration Valve on Suction Side of Pump, Air Induction System at Check Valves, Inert Gas Port Option, & Time Delay Pump Purge. |

Your local distributor:

Form# BH0802

Note: Due to Yamada's continued commitment to product improvement, specifications may change without notice. Teflon® is a registered trademarks of DuPont Dow Elastomers