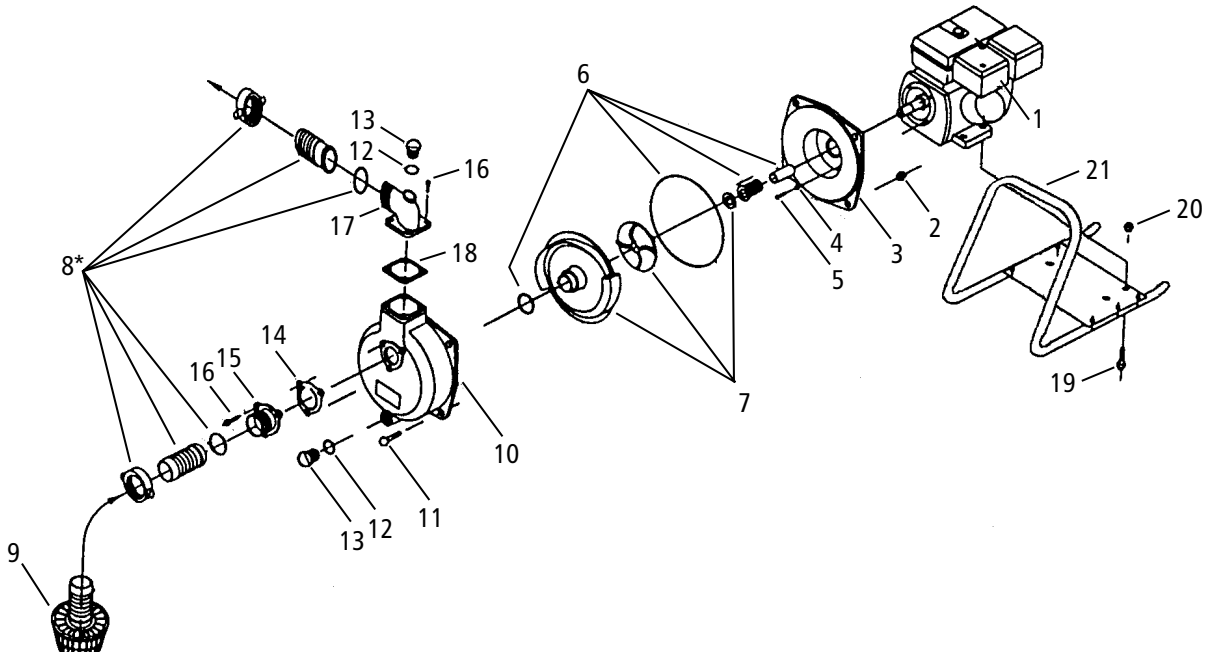


ITT

Commercial Water

Goulds Pumps

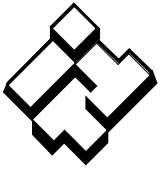
AU REPAIR PARTS



Goulds Pumps is a brand of ITT Corporation.

www.goulds.com

Engineered for life



ITT

Commercial Water

Item	Part Description	Before	After	Part No. 3"	Quantity
		SN-J051171U	SN-J051171U		
		Part No. 2"	Part No. 2"		
1	Engine – 3½ HP	16K1			1
	Engine – 5 HP	16K2			
2	Locknut – ¾" – 16	16K3			4
3	Engine adapter	16K4			1
4	Aluminum washer – 5/16"	16K5			4
5	Bolt – 5/16" – 24 x ¾"	16K6			4
6	Seal assembly	16K7			1
	Shaft sleeve				1
	O-ring housing				1
	O-ring volute				1
7	Impeller	16K8		16K9	1
	Volute				
	Impeller shim: 010, 020, 030				
8	Hose mounting nipple	16K10*	NA	NA	2
	Hose mounting nut (BSP)				2
	Hose mounting gasket				2
9	Suction strainer	16K71	16K72		1
10	Pump housing	16K12	16K13		1
11	Bolt – ¾" – 16 x 1½"	16K14			4
12	O-ring, drain/filler plug	16K15	16K16		2
13	Drain/fill plug with o-ring	16K17	16K18		2
14	Flapper valve	16K19	16K20		1
15	Suction flange	16K21* (BSP)	16K128 (NPT)	16K22 (NPT)	1
16	Bolt – 5/16" – 18" x 7/8"	16K23			7
17	Discharge elbow	16K25* (BSP)	16K129 (NPT)	16K26 (NPT)	1
18	Discharge gasket	16K27		16K28	1
19	Bolt – 5/16" – 18" x 1½"	16K29			4
20	Lock nut – 5/16" – 18	16K30			4
21	Cradle assembly	16K31			1

* Supplied with 2AU, built before September 2005.



Goulds Pumps and the ITT Engineered Blocks Symbol are registered trademarks and tradenames of ITT Corporation.

SPECIFICATIONS ARE SUBJECT TO CHANGE WITHOUT NOTICE.

RAU March, 2008

© 2008 ITT Corporation

Engineered for life